

Bøjning – falset

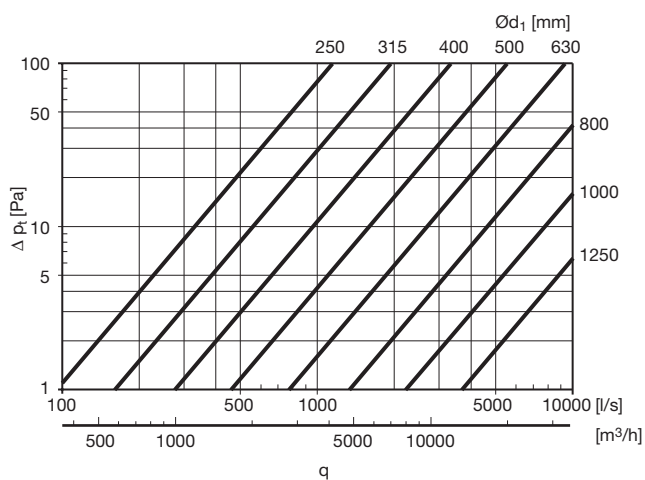
BFU 90°



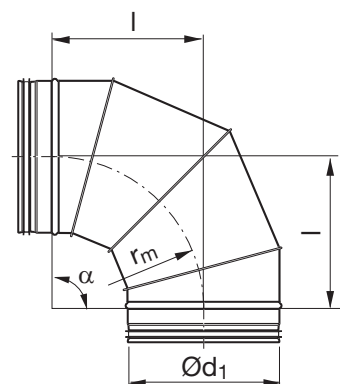
Beskrivelse

Falset bøjning i forskellige vinkler til Lindab Safe, radius 1 gange diameter.

Tekniske data



Dimensioner



$$r_m \approx 1 \cdot d_1$$

$\text{Ø}d_1$ nom	l [mm]	m [kg]	
250	250	2,20	4
315	315	3,00	4
355	355	3,75	4
400	400	5,64	4
450	450	7,00	4
500	500	8,20	4
560	560	10,1	4
630	630	12,9	4
710	710	19,8	4
800	800	26,0	4
1000	1000	42,0	5
1250	1250	64,0	5

Bestillingskode

Produkt	BFU	315	90
Dimension $\text{Ø}d_1$			
Vinkel α			



Bøjning – falset

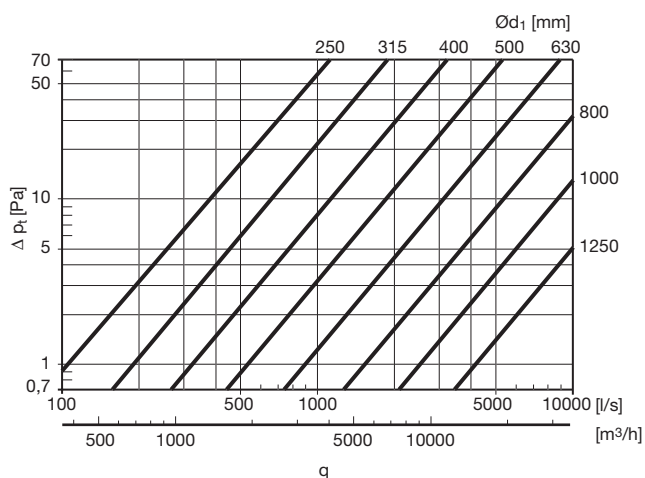
BFU 60°



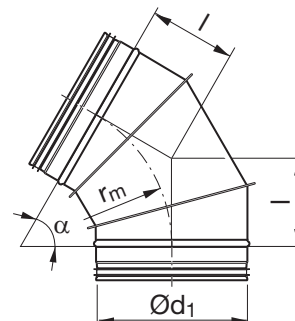
Beskrivelse

Falset bøjning i forskellige vinkler til Lindab Safe, radius 1 gange diameter.

Tekniske data



Dimensioner



$$r_m \approx 1 \cdot d_1$$

Ød ₁ nom	l [mm]	m [kg]
250	144	1,48
315	182	2,20
355	205	2,80
400	231	3,47
450	260	4,70
500	289	6,00
560	323	7,40
630	364	9,20
710	410	11,3
800	462	14,8
1000	577	24,2
1250	722	36,6

Bøjning – falset

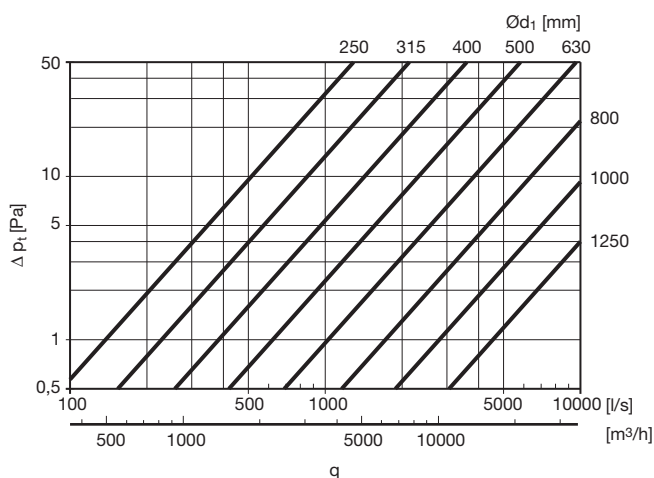
BFU 45°



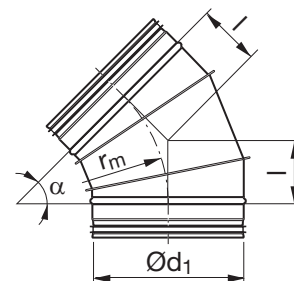
Beskrivelse

Falset bøjning i forskellige vinkler til Lindab Safe, radius 1 gange diameter.

Tekniske data



Dimensioner



$$r_m = 1 \cdot d_1$$

Ød ₁ nom	l [mm]	m [kg]
250	104	1,26
315	130	1,90
355	147	2,26
400	166	2,96
450	186	4,00
500	207	4,90
560	232	6,10
630	261	7,49
710	294	11,3
800	331	15,0
1000	414	19,5
1250	518	38,0

Bøjning – falset

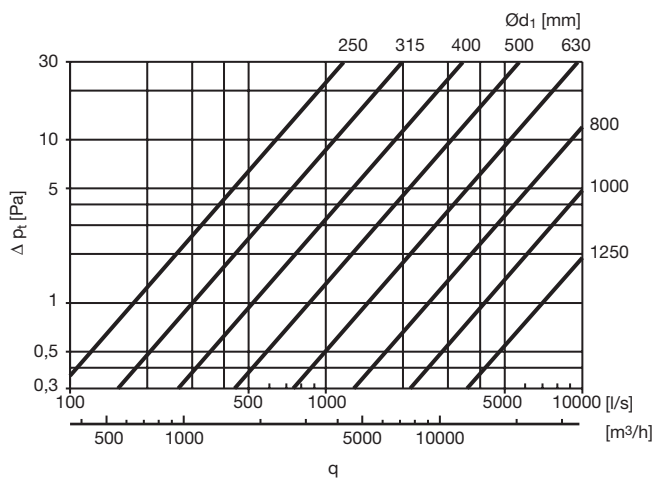
BFU 30°



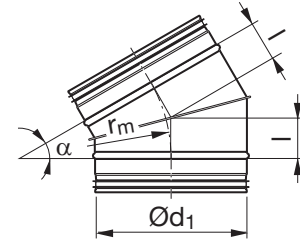
Beskrivelse

Falset bøjning i forskellige vinkler til Lindab Safe, radius 1 gange diameter.

Tekniske data



Dimensioner



$$r_m = 1 \cdot d_1$$

Ød ₁ nom	l [mm]	m [kg]
250	67	1,00
315	84	1,42
355	95	1,70
400	107	2,27
450	121	3,00
500	134	3,70
560	150	4,60
630	169	5,60
710	190	8,60
800	214	11,0
1000	268	13,4
1250	335	19,0

Bøjning – falset

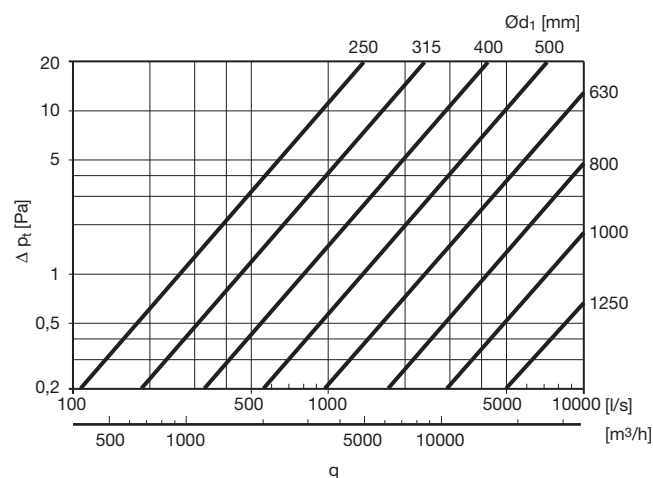
BFU 15°



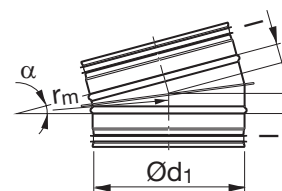
Beskrivelse

Falset bøjning i forskellige vinkler til Lindab Safe, radius 1 gange diameter.

Tekniske data



Dimensioner



$$r_m = 1 \cdot d_1$$

Ød ₁ nom	l [mm]	m [kg]
250	33	0,65
315	41	0,91
355	47	1,41
400	53	1,70
450	59	2,20
500	66	2,65
560	74	3,30
630	83	4,00
710	93	5,80
800	105	7,00
1000	132	10,4
1250	165	14,5